

# Conext System Control Panel

Monitor and configure Conext inverter charger systems and Xanbus enabled accessories.



## Product at a glance

The Conext™ System Control Panel (SCP) eliminates the need for separate control panels for each device and gives a single point of control to set up and monitor the entire Conext inverter/charger system, including Conext MPPT Solar Charge Controllers. Featuring a graphical backlit liquid crystal display (LCD), the SCP selectively displays configuration, status, and diagnostic information for all devices connected to the Xanbus™ network.

## Why choose Conext System Control Panel?

### Higher return on investment

- Get the most out of Conext inverter/charger systems and Conext MPPT Solar Charge Controllers
- Clearly understand status and settings
- Optimize system setup and device performance

### Designed for reliability

- Extensive quality and reliability testing

### Flexible

- Monitor and configure Conext XW+, SW, MPPT 60 150, MPPT 80 600, AGS, Battery Monitor
- Multiple SCPs can be used on the same Xanbus network
- Compatible with Conext ComBox

### Easy to service

- Access and troubleshoot Xanbus-enabled devices on the network from one location
- Remove and replace without the loss of device settings

### Easy to install

- Surface mount or panel mount on wall
- RJ45 connections for Xanbus network cables

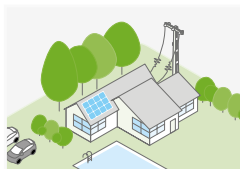
### True bankability

- Warranty from a trusted partner with 180 years of experience
- World leader in industrial power drives, UPS and electrical distribution
- Strong service infrastructure worldwide to support your global needs

## Product applications



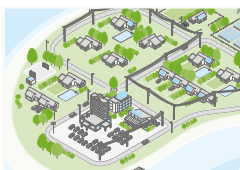
Backup power



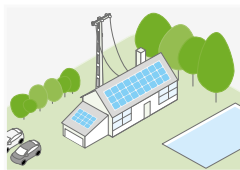
Residential grid-tie solar with backup power



Off-grid solar



Community electrification



Self-consumption

| Device short name                         | Conext System Control Panel  |
|---|--|
| <b>Electrical specifications</b>          |  |
| Nominal voltage                           | 15 Vdc   |
| Min. operating network voltage            | 14.25 Vdc  |
| Max. operating network voltage            | 15.75 Vdc  |
| Max. operating current at nominal voltage | 200 mA   |
| <b>General specifications</b>             |  |
| Dimensions (H x W x D)                    | 15.2 x 10.3 x 4.0 cm (5.9 x 2.6 x 1.6 in)  |
| Weight                                    | 200.0 g (0.4 lb)   |
| Shipping weight                           | 800.0 g (1.8 lb)   |
| Mounting options                          | Panel-mount, wall-mount  |
| IP rating/location                        | IP20, indoor only  |
| Operating temperature range               | -20 to 50 °C (-4 to 122 °F)  |
| Part number                               | 865-1050-01  |
| <b>Features</b>                           |  |
| Network                                   | Protocol: Xanbus/Connectors: RJ45  |
| Internal clock                            | Provides network time  |
| Memory                                    | Nonvolatile  |
| Alarm                                     | Audible  |
| Display                                   | Backlit LCD; Green/red LED   |
| Front-panel interface                     | Four menu buttons, one standby button  |
| Warranty                                  | 2 to 5 years (depending on country)  |
| <b>Regulatory approvals</b>               |  |
| Safety                                    | CSA 107.1, UL 458 4 <sup>th</sup> Ed   |
| EMC                                       | CE directive 2004/108/EC, IEC/EN61000-6-3, IEC/EN61000-6-1, FCC Part 15B Class B, Industry Canada ICES-00. Class B, C-Tick |
| <b>Included parts</b>                     |  |
|   | One remote head  |
|   | One network terminal   |
|   | One CAT5 cable (2.1 m)   |
|   | One mounting plate   |
|   | One mounting bracket   |
|   | Four #8 screws   |
|   | Two #6 screws  |
| <b>Compatible products</b>                |  |
| Conext XW+ (230 V)                        | XW 7048 E product no. 865-7048-61/XW 8548 E product no. 865-8548-61  |
| Conext XW+ (120/240 V)                    | XW 5548 NA product no. 865-5548-01/XW 6848 NA product no. 865-6848-01  |
| Conext SW (230 V)                         | SW 2524 product no. 865-2524-61/SW 4024 product no. 865-4024-61/SW 4048 product no. 865-4048-61                            |
| Conext SW (120 V)                         | SW 2524 product no. 865-2524/SW 4024 product no. 865-4024/SW 4048 product no. 865-4048                                     |
| Conext MPPT 80 600                        | Product no. 865-1032   |
| Conext MPPT 60 150                        | Product no. 865-1030-1   |
| Conext Automatic Generator Start          | Product no. 865-1060   |
| Conext ComBox                             | Product no. 865-1058   |
| Conext Battery Monitor                    | Product no. 985-1081-01  |

Specifications are subject to change without notice.